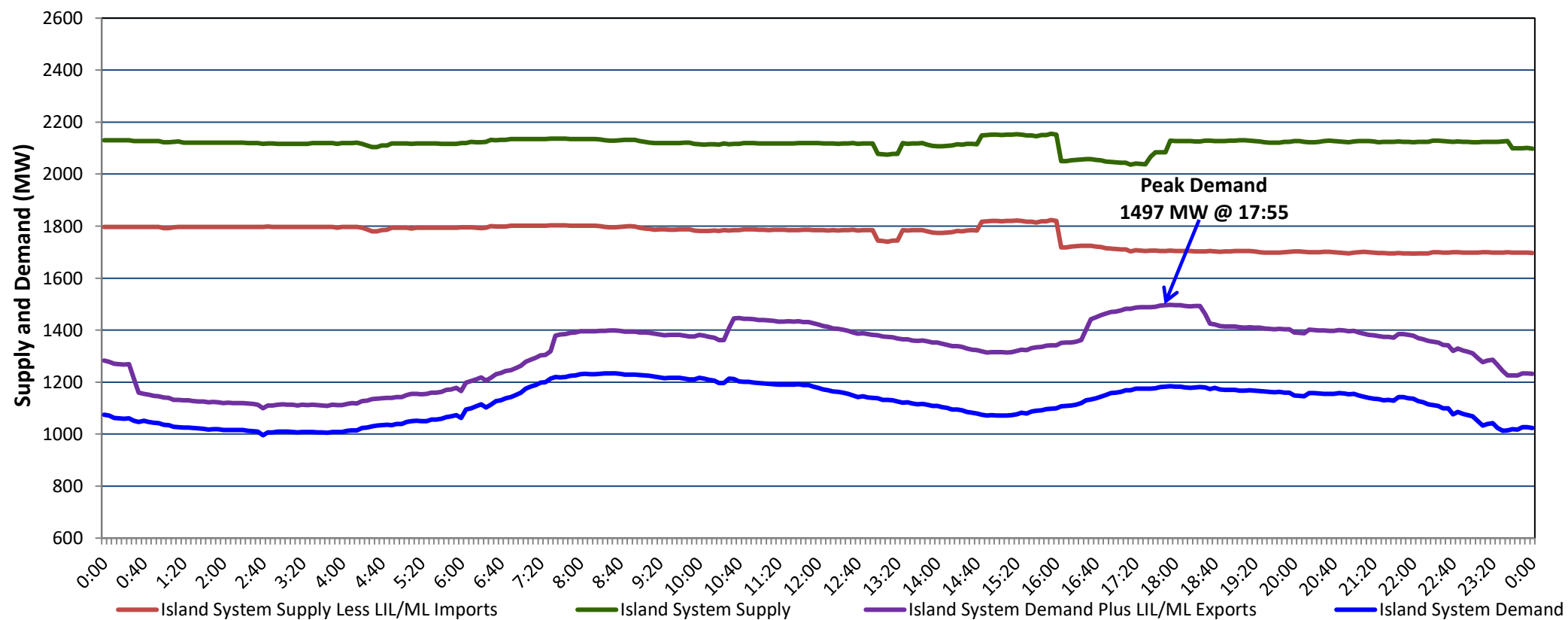


Newfoundland Labrador Hydro (NLH) Supply and Demand Status Report Filed Wednesday, February 22, 2023

Section 1 Island Interconnected System Supply, Demand & Exports Actual 24 Hour System Performance For Tuesday, February 21, 2023



Supply Notes For February 21, 2023

- 1,2
- A As of 1144 hours, February 16, 2023, Holyrood Unit 1 unavailable (170 MW).
 - B At 1257 hours, February 21, 2023, Granite Canal Unit unavailable due to planned outage (40 MW).
 - C At 1324 hours, February 21, 2023, Granite Canal Unit available (40 MW).
 - D At 1444 hours, February 21, 2023, Holyrood Unit 3 available at 100 MW (150 MW).
 - E At 1602 hours, February 21, 2023, Holyrood Unit 3 unavailable 100 MW (150 MW).

Section 2 Island Interconnected Supply and Demand

| Wed, Feb 22, 2023 | Island System Outlook ³ | | Seven-Day Forecast | Temperature (°C) | | Island System Daily Peak Demand (MW) | |
|--|------------------------------------|-------|------------------------------|------------------|---------|--------------------------------------|-----------------------|
| | | | | Morning | Evening | Forecast | Adjusted ⁷ |
| Available Island System Supply: ⁵ | 2,026 | MW | Wednesday, February 22, 2023 | -1 | -4 | 1,640 | 1,541 |
| NLH Island Generation: ^{4,8} | 1,375 | MW | Thursday, February 23, 2023 | -8 | -12 | 1,730 | 1,630 |
| NLH Island Power Purchases: ⁶ | 140 | MW | Friday, February 24, 2023 | -13 | -10 | 1,660 | 1,561 |
| Other Island Generation: | 230 | MW | Saturday, February 25, 2023 | -11 | -14 | 1,730 | 1,630 |
| ML/LIL Imports: | 281 | MW | Sunday, February 26, 2023 | -16 | -14 | 1,710 | 1,610 |
| Current St. John's Temperature & Windchill: | -2 °C | -8 °C | Monday, February 27, 2023 | -13 | -11 | 1,710 | 1,610 |
| 7-Day Island Peak Demand Forecast: | 1,730 | MW | Tuesday, February 28, 2023 | -8 | -5 | 1,710 | 1,610 |

Supply Notes For February 22, 2023

- 3
- Notes:
1. Generation outages for running and corrective maintenance are included. These are not unusual for power system operations. They generally do not impact customer supply. The power system operators schedule outages to system equipment whenever possible to coincide with periods when customer demands are low and sufficient supply reserves are available. However, from time to time equipment outages are necessary and reserves may be impacted.
 2. Due to the Island system having no synchronous connections to the larger North American grid, when there is a sudden loss of large generating units there may be a requirement for some customer's load to be interrupted for short periods to bring generation output equal to customer demand. This automatic action of power system protection, referred to as under frequency load shedding (UFLS), is necessary to ensure the integrity and reliability of system equipment. Under frequency events have typically occurred 5 to 8 times per year on the Island Interconnected System and the resultant customer load interruptions are generally less than 30 minutes. With the activation of the Maritime Link frequency controller during the winter of 2018, UFLS events have occurred less frequently.
 3. As of 0800 Hours.
 4. Gross output including station service at Holyrood (24.5 MW) and improved NLH hydraulic output due to water levels (35 MW).
 5. Gross output from all Island sources (including Note 4).
 6. NLH Island Power Purchases include: CBPP Co-Gen, Nalcor Exploits, Rattle Brook, Star Lake, Wind Generation and capacity assistance (when applicable).
 7. Adjusted for curtailable load, market activities and the impact of voltage reduction when applicable.
 8. Due to limitations inherent in the design of combustion turbines, the output of combustion turbines may be reduced in the event that ambient temperatures exceed the threshold

Section 3 Island Peak Demand Information Previous Day Actual Peak and Current Day Forecast Peak

| | | | |
|-------------------|--|-------|----------|
| Tue, Feb 21, 2023 | Actual Island Peak Demand ⁹ | 17:55 | 1,497 MW |
| Wed, Feb 22, 2023 | Forecast Island Peak Demand | | 1,640 MW |

- Notes: 9. Island Demand / LIL / ML Exports (where applicable) is supplied by NLH generation and purchases, plus generation owned and operated by Newfoundland Power and Corner Brook Pulp & Paper (Deer Lake Power, DLP).